

# DPI Marine Inc.

## Pull Kit Install Instructions



1200 Abbott Drive, Elgin, IL 60123  
Phone: 847-488-9155 / Fax: 847-488-9154  
<https://www.dpimarineinc.com/>

## What's Included

### Parts:

- 1 – Spring
- 1 – Handle
- 1 – Cam
- 1 – Flat washer
- 1 – Knurled pin
- 1 – O-ring

**\*Recommended tools: small pliers or needle nose pliers, Small diameter Screw driver to pop out old pin**

## Installation Instructions:

### Step 1:

Place the spring over the shaft of the camv (Pic 1)

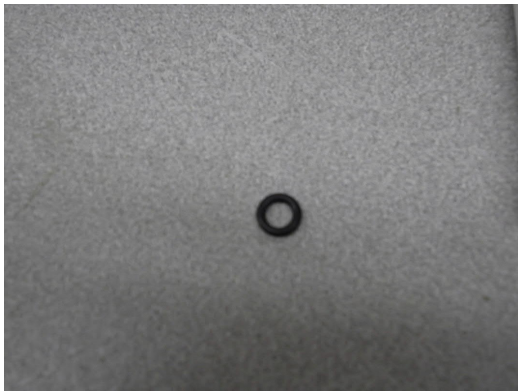


Pic 1

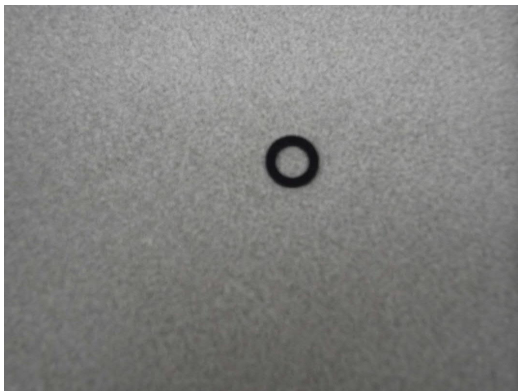
# DPI Marine Inc.

## Step 2:

Make sure you can tell the difference between the o-ring (Pic 2) and the flat washer. (Pic 3) Both side by side (Pic 4)



Pic 2



Pic 3



Pic 4

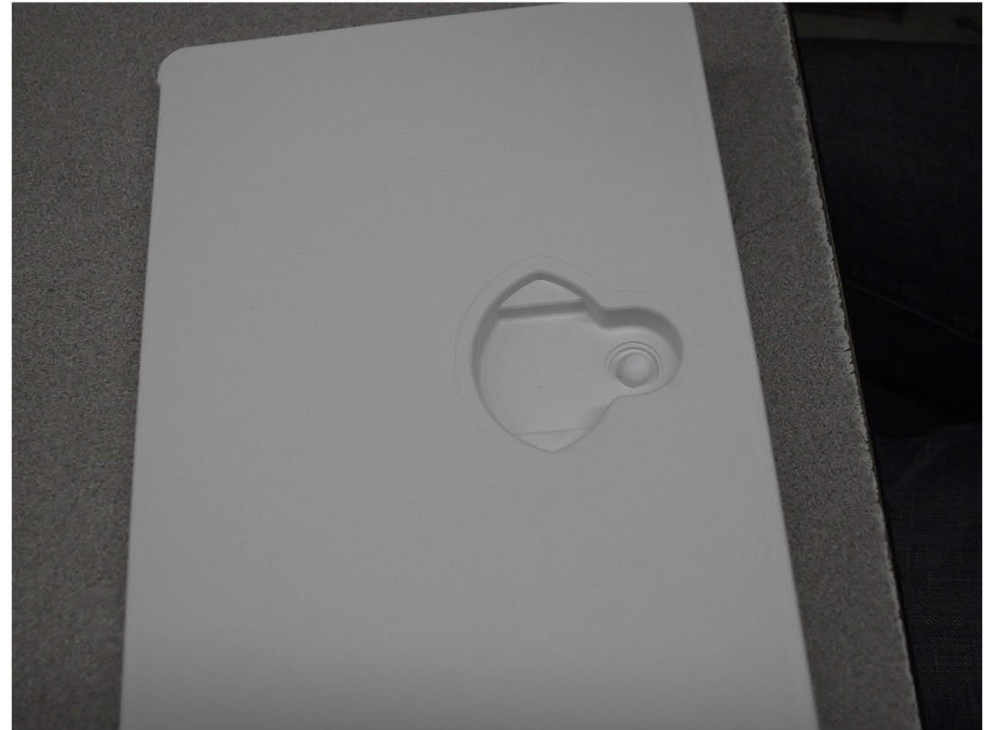
# DPI Marine Inc.

## Step 3:

Be sure the body of the cam stays facing to the left. (Pic 5) From the bottom of the door, push the shaft of the cam through the handle hole. (Pic 6)



Pic 5



Pic 6

# DPI Marine Inc.

## Step 4:

Next push the o-ring over the shaft of the cam that is sticking through the hole. (Pic 7)



Pic 7

# DPI Marine Inc.

## Step 5:

After the o-ring is on, push the flat washer over the shaft until it is seated in the door. (Pic 8)



Pic 8

# DPI Marine Inc.

## Step 6:

Place the handle so that the "Pull Up & Turn" is face up. Push the knurled pin (smooth side first) through the hole from the left. (Pic 9)



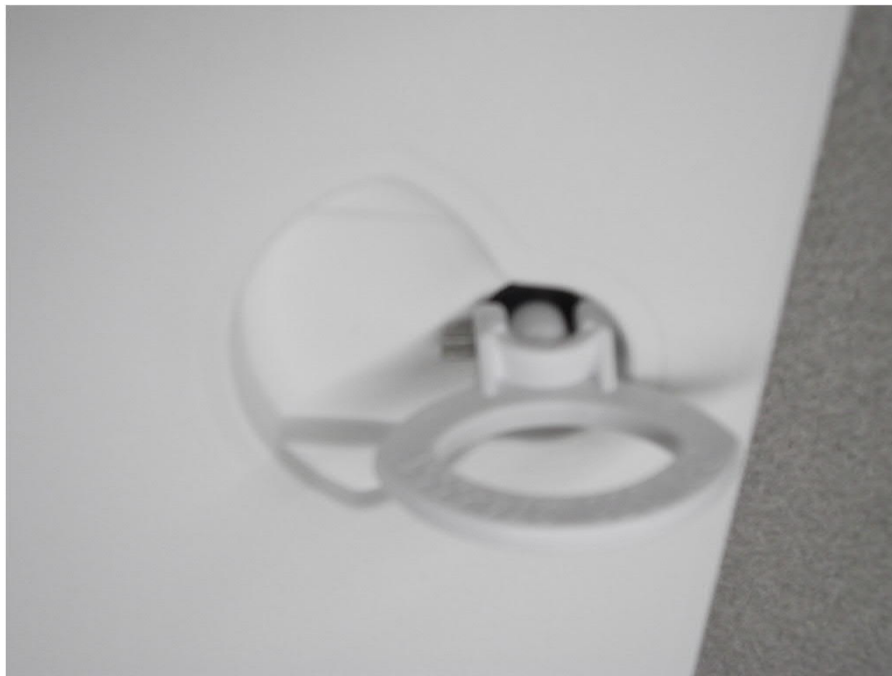
Pic 9



# DPI Marine Inc.

## Step 7:

Making sure the handle is perpendicular to the cam , line up the hole in the cam shaft with the knurled pin and push the pin through the cam shaft hole. Once you reach the knurled part of the pin you may need to use pliers to push it until it's even. (Pic 10) When the pin is even with the handle you are finished. (Pic 11)



Pic 10



Pic 11